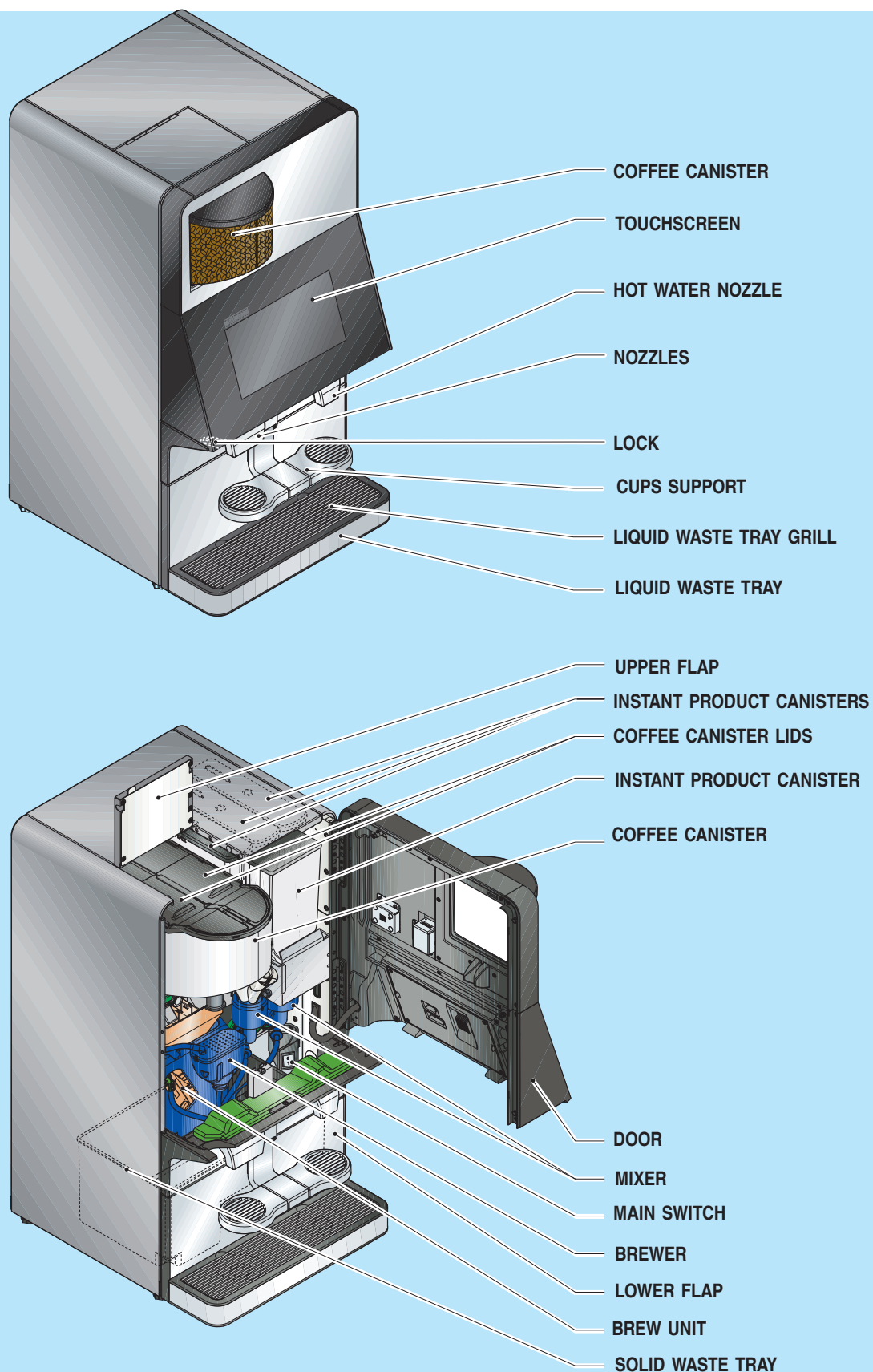
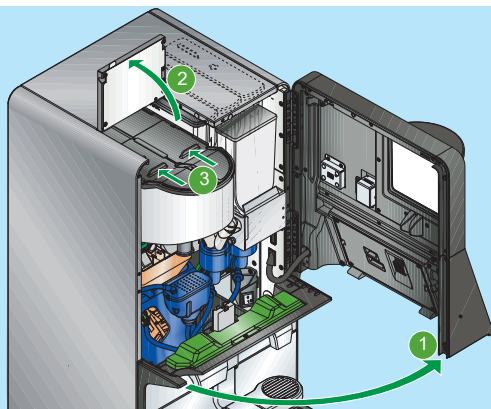




Specific products for coffee machines can be used for cleaning.
Follow the manufacturer's instructions for dosage, method and application times.



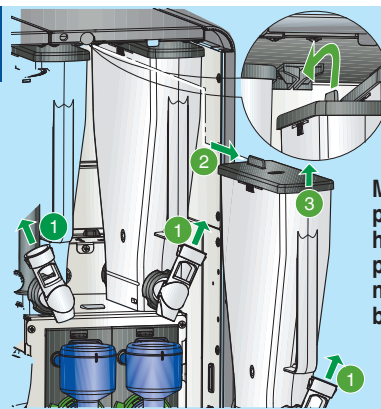
1



Coffee loading

1. Open the machine door
2. Lift the upper panel
3. Slide open the canister lid and fill with coffee
4. If the canister level control is active, indicate the quantity loaded from "daily operations"

2

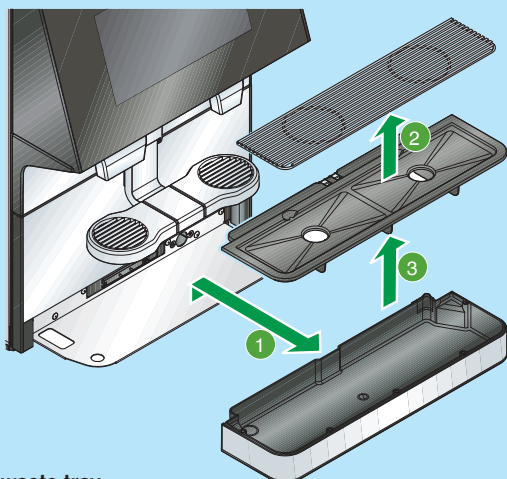


Make sure that the products to be loaded have been properly preserved and they are not past their "best before" date

Instant products loading

1. Lift the instant powder conveyor;
2. Remove the canister from the shelf;
3. Lift the lid and fill in the canister;
4. Reposition the canister, taking care to insert it into the guide.
5. If the canister level control is active, indicate the quantity loaded from "daily operations"

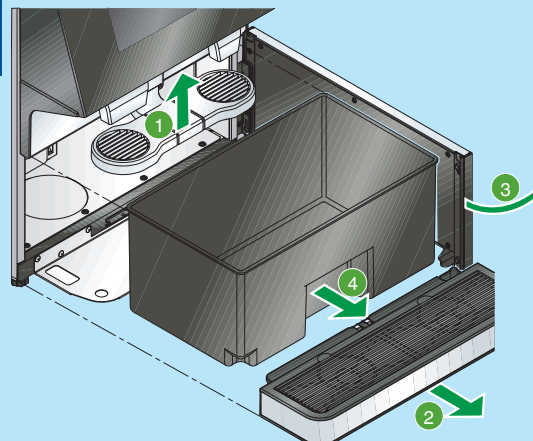
1



liquid waste tray

1. Take the liquid waste tray by its sides, slightly lift and pull it;
2. Separate the parts from the tray and empty the residue; wash the parts with a neutral detergent solution, taking care to remove all residue.

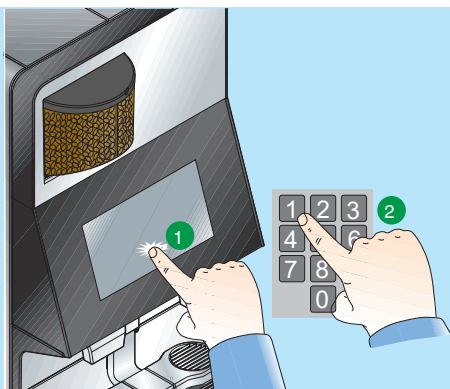
2



solid waste trays

1. Lift the cup support by pushing it upward
2. Remove the liquid waste tray
3. Open the lower flap, remove the solid waste tray and wash it
4. From the "daily operations" functions, reset the counter that manages the "solid waste full" signal

1

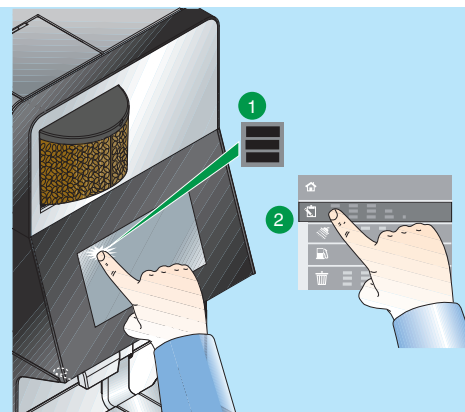


Write down the programmed access password

"Daily operations" can be accessed in one of the following ways:

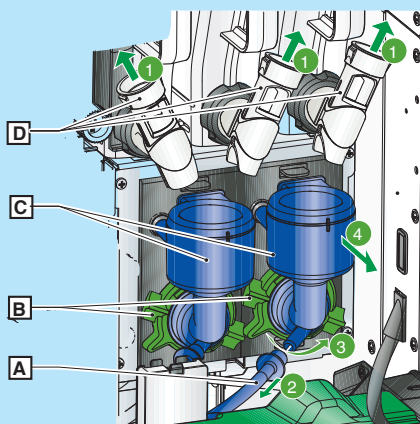
- Open the machine door
- Or if enabled by menu
- Touch and hold the brand logo for 2 seconds (if enabled by menu)

2



1. Touch to access the menu
2. Touch the "Daily operations" function
3. Enter the desired function
 - Canisters filling: to indicate the amount of loaded product
 - Waste reset: to cancel the "waste full" signal
 - Washing functions
4. Touch and then to quit the menu

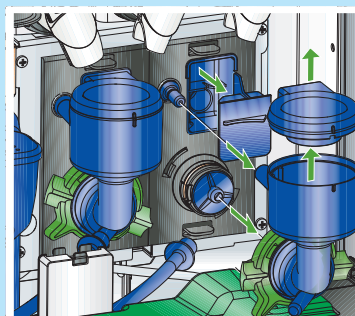
1



Mixer disassembly

1. Lift the instant product conveyor (D)
2. Detach the tube (A) from the mixer
3. Turn the mixer fastening lever (B) counterclockwise
4. Remove the mixer (C)

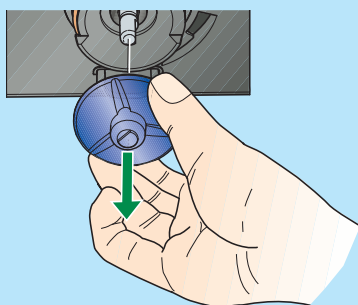
2



Mixer disassembly

1. Disconnect the tube from the mixer
2. Turn the mixer fastening lever
3. Separate all components and clean them. Remove visible residues and/or films.

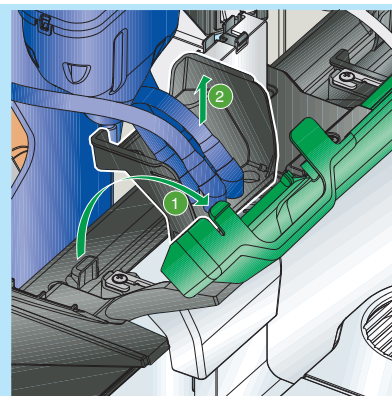
3



Mixer impeller disassembly

1. Exert a slight traction to remove the mixer impeller
2. Clean the impeller and remove visible residue and/or films.
3. Wash and rinse the blue parts under a stream of warm water, using a clean brush and, if necessary, a food-grade detergent.
4. Dry the parts with a paper towel.

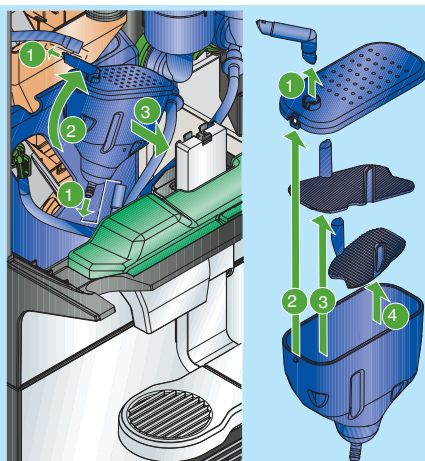
4



Nozzle disassembly

1. Lift the cover
2. Slide off the nozzle support (black part)
3. disconnect the tubes and remove the nozzles
4. Wash and rinse the parts under a stream of warm water, using a clean brush and, if necessary, a food-grade detergent.
5. Dry the parts with a paper towel.

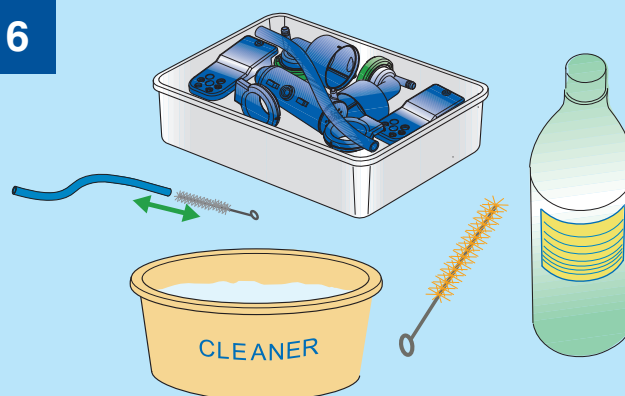
5



Brewer disassembly

1. Detach the tubes from the brewer
2. Turn the brewer to the right: the brewer will release from the cover
3. Separate all the brewer components and clean them. Remove visible residues and/or films.

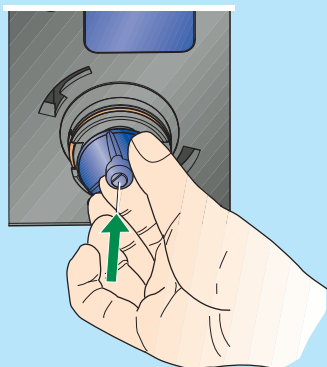
6



Parts washing

1. Wash all the disassembled parts, taking care to remove any visible residues and films using pipe cleaners and/or brushes if necessary.
2. Clean the drink dispensing tubes using a pipe cleaner.
3. Rinse the parts under running water.
4. Dry all parts with a clean, dry cloth

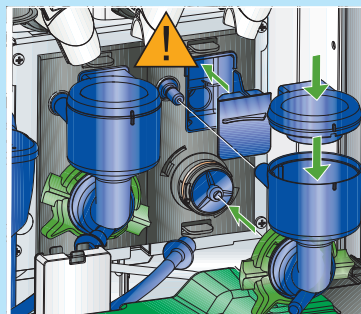
7



Mixer impeller assembly

1. Reposition and push the mixer impeller
2. Make sure it is fully inserted until it clicks in

8



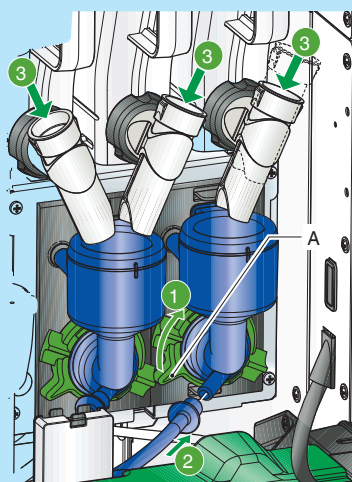
Mixer assembly

1. Reassemble the components and reposition the mixer



Make sure the mixer is correctly connected.

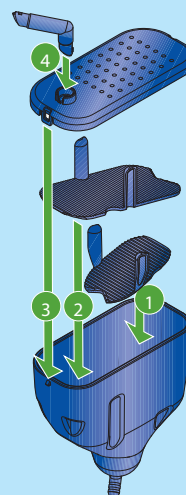
9



Mixer fastening

1. Turn the lever (A) clockwise to fasten the mixer to the machine
2. Re-connect the tubes to the mixers
3. Lower down the instant powders ports

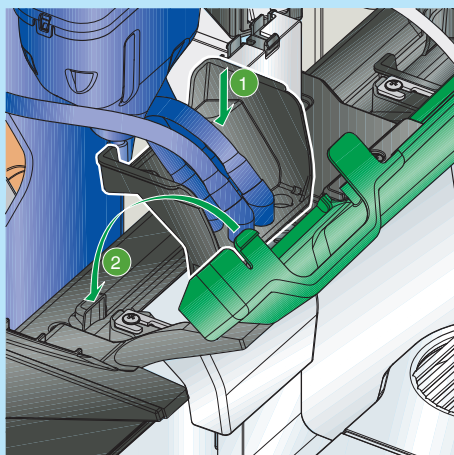
10



Brewer assembly

1. After cleaning all the components, reassemble the brewer
2. Fasten the brewer to the cover

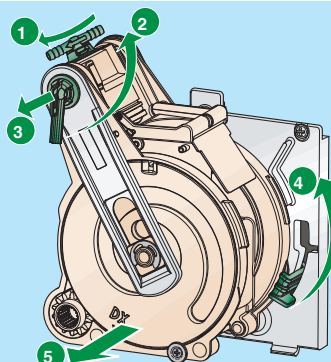
11



Nozzle assembly

1. Re-connect the tubes to the nozzles
2. Insert the nozzles into the support
3. Reposition the nozzle support
4. Remove the protection cover

12



Cleaning the brew unit

Whenever the machine is loaded or at least every week, it is recommended to remove any coffee residue from around the brew unit

1. Turn the upper piston nozzle to release it
2. Rotate the coffee outlet nozzle by 90° and pull it toward you
3. Turn the unit retaining lever until it is horizontal
4. Remove the brew unit
5. Rinse the brew unit beneath a water jet
6. Reposition the brew unit by carrying out the operations in reverse order