

9100

DATA SHEET



WITTENBORG

designed to last



TECHNICAL DATA

BREWER & BOILER

Z4000 ES/FB brewer with
coffee capacity up to 15 grams
Brewer washing with cleaning cycle,
tablets optional
Large capacity 800 cc espresso boiler

CANISTER CAPACITIES

Bean hopper with insert 4.4 lb each side
Bean hopper without insert 8.8 lb
Number of soluble canisters: 4
Cappuccino 4.0 lb (Cuprissimo)
French Vanilla 4.0 lb (Cuprissimo)
Chocolate 4.0 lb (Cuprissimo)
4th Powder canister 2.2 lb

*The weight of beans varies depending on type of roasting.

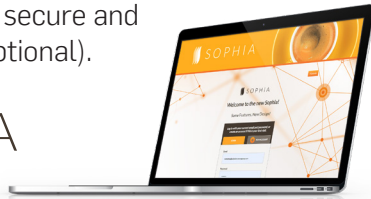
TECHNOLOGY AND FEATURES

10 inch touchscreen
Mechanical counter
Waste container capacity: Approximately 8 lb
Drip tray capacity: Approximately 30.4 oz
Cup sizes: 0.75 to 16 oz
Settings and software transfer using common USB
Optional LTE Connectivity

ONLINE SOLUTIONS

Manage your assets through our web-based
application, connected to a secure and
private cellular network (optional).

 S O P H I A



Order coffee without ever touching
the brewer.

SCAN. SELECT. ENJOY.

S O P H I A
TOUCHLESS SOLUTIONS



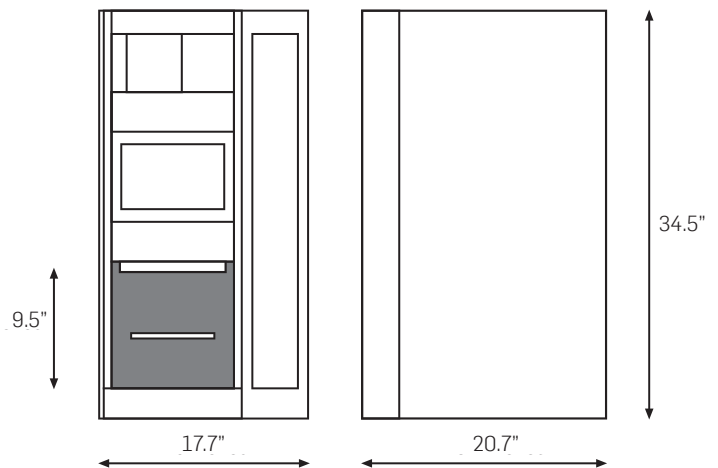
OPTIONAL ACCESSORIES

Base stand (30.5"h • 17.75"w • 17.375"d)
Grounds kit for base stand

DIMENSIONS & POWER DATA

Dimensions: 34.5"h • 17.7"w • 20.7"d
Machine weight: 165 lb
Pallet weight: 188 lb
Power consumption: 1260 W
Heating element: 1100 W
Voltage: 120 V

Added height with open top : 7.7 inches



More Info



WITTENBORG

A brand of
Evoca Group

Evoca North America
2355, avenue Dalton, Québec (Québec) G1P 3S3, Canada
T: 800-561-6162 - F: 800-463-2739
www.evocagroupna.com

Headquarters: Evoca S.p.A.
Via Roma, 24 - 24030 Valbrembo (BG) Italy
T. +39 035606111
www.evocagroup.com

23BR001-W2A
9100 Brochure | 2025-02