

# La Radiosa

## Cleaning Guide

### FILLING UP INGREDIENTS

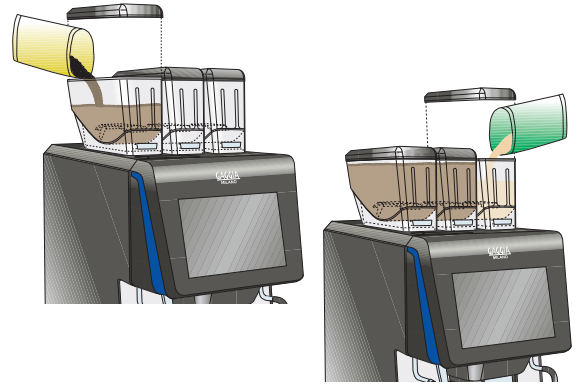
#### COFFEE BEANS & SOLUBLE INGREDIENT

- 1 Remove the lid of a coffee bean or soluble ingredient canister. **Remove one lid at a time.**
- 2 Fill the canister with the appropriate product leaving 1 inch headspace, then reinstall the lid.



**Make sure to avoid cross-contamination.**  
**Do not compress the soluble ingredient.**  
**Do not overfill the canisters.**

- 3 Repeat Steps 1 and 2 for the other canisters.
- 4 Indicate how much product has been loaded via the “Daily operations” function (see section below).



### CLEANING WASTE CONTAINERS

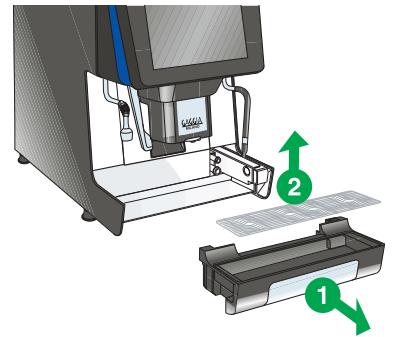
#### DRIP TRAY

- 1 Pull the drip tray out.
- 2 Empty the drip tray, then rinse the tray and its grill under hot water.



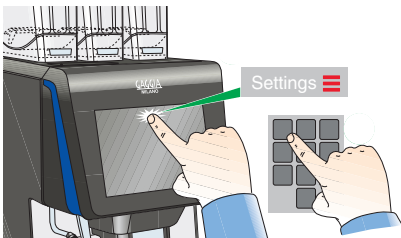
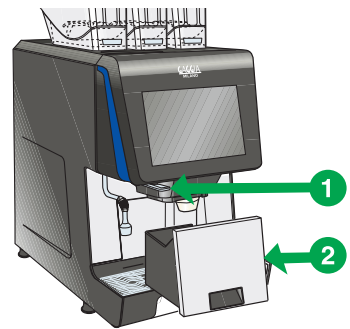
**WARNING! Drip tray may be full of hot liquid.**

- 3 Reinstall the drip tray.



#### INTERNAL WASTE BIN

- 1 Lift the nozzles using the lever.
- 2 Pull the internal waste bin out.
- 3 Empty the waste bin and clean it.
- 4 Reinstall the internal waste bin.
- 5 Confirm the waste bin has been emptied via the “Daily operations” function (see section below).




### DAILY OPERATIONS FUNCTION

Tap the **Settings**  icon on the selection screen and enter the password.

Select the “Daily operations” function.

Access the desired function to either indicate products have been filled and/or reset waste bin count.

Tap the  icon to exit the menu.

# La Radiosa Cleaning Guide



*The different wash cycles listed below do not replace the need to disassemble the components for regular sanitization.*

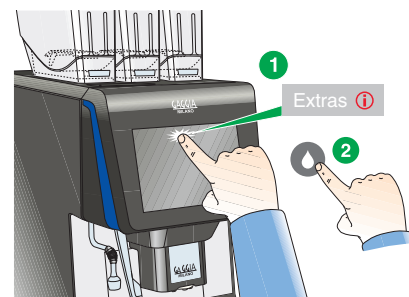
*If the machine is NOT equipped with a drainage system, always place a container of at least 3 L under the nozzle.*

## ACCESSING THE CLEANING MENU

Tap the **Extras** ⓘ icon on the selection screen.


Select the **CLEANING** ☂ menu, then enter the password.

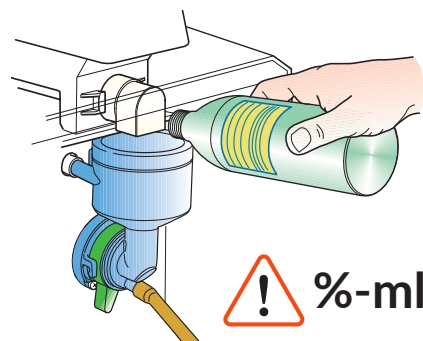
Select the cleaning or rinsing cycle to be performed.




## PERFORMING A CLEANING CYCLE

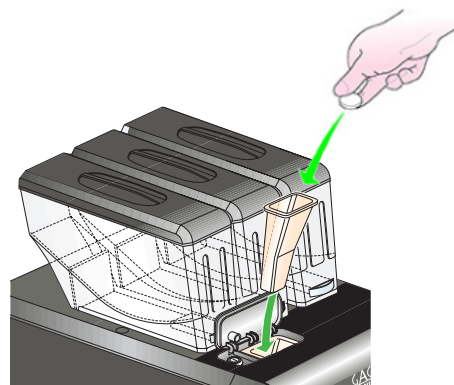
### MIXING BOWL CLEANING

- 1 Access the **CLEANING** menu and tap the **Mixer** button to perform the cleaning cycle.
- 2 Pour a few drops of sanitizing solution into the mixer during the cycle.  
 **Follow the dosing directions on the sanitizing solution packaging.**
- 3 Perform a second rinse cycle **WITHOUT** sanitizing solution to remove any remaining product.
- 4 If applicable, empty the container. Be careful, the water is **VERY HOT**. **Do not drink this water.**



### BREW GROUP CLEANING

- 1 Open the decaffeinated coffee access door.
- 2 Insert the detergent chute into the decaffeinated coffee chute.
- 3 Add a brew group cleaning tablet into the chute.  
 **Use only coffee machine-specific products.**  
**Follow the dosing directions on the product packaging.**
- 4 Access the **CLEANING** menu, tap the **Brewer** button and select the **With tablet** option to perform the cleaning cycle.
- 5 Perform a brew group rinse cycle **WITHOUT** a cleaning tablet to remove any remaining product (**Brewer** button > **Rinsing**).
- 6 Remove the detergent chute.
- 7 If applicable, empty the container. Be careful, the water is **VERY HOT**. **Do not drink this water.**



## CLEANING MILK COMPONENTS

### MILK TUBE & COOLING UNIT

- 1 Turn off the milk cooling unit.
- 2 Access the **CLEANING** menu, tap the **Milk** button and select the **Cleaning** option.
- 3 Place a container of at least 4 L under the nozzles. (Fig. 1)
- 4 Remove the cooling unit and/or milk container, then place the milk tube in a container of at least 3 L beside the machine. (Fig. 1)



**The milk tube must rest on the bottom of the container.**

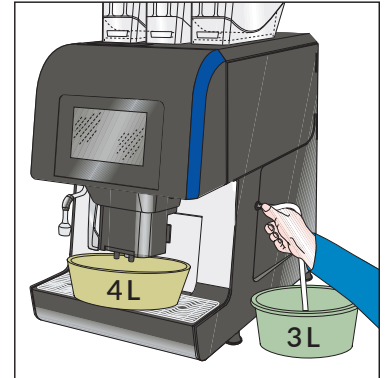


Fig. 1

- 5 Add a cleaning tablet in the container. (Fig. 2)



**Use only milk system-specific products.**  
**Follow the dosing directions on the product packaging.**

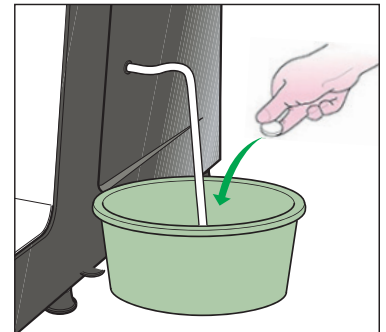


Fig. 2

- 6 When all required steps have been performed, tap the **Ok** buttons on the screen to start the cleaning cycle.



≈ 10-15 min

The machine will automatically prepare the cleaning solution by pouring hot water into the container. The solution will be sucked up and will rinse the whole milk circuit.

- 7 During the automatic cleaning process, clean the milk cooling unit using a wet, soft cloth. Then, wipe it with a dry cloth. (Fig. 3)
- 8 At the end of the milk cleaning cycle, remove and empty the two containers. **Do not drink this water.**

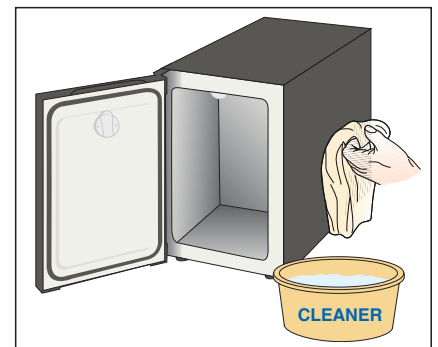


Fig. 3

- 9 Clean the exterior of the milk tube using a soft cloth. (Fig. 4)
- 10 Tap the **Ok** buttons on the screen to finalize the process.
- 11 Put the milk cooling unit back in place. Reinsert the milk tube in the cooling unit and/or milk container.



**Make sure the milk tube is correctly positioned so it is supplied with milk.**

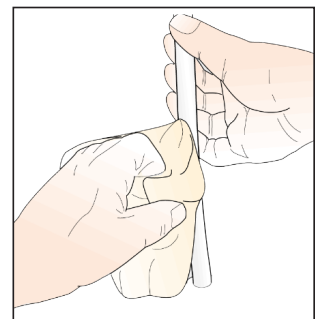


Fig. 4

- 12 Turn the milk cooling unit on and wait for the operating temperature to be reached.

# La Radiosa Cleaning Guide

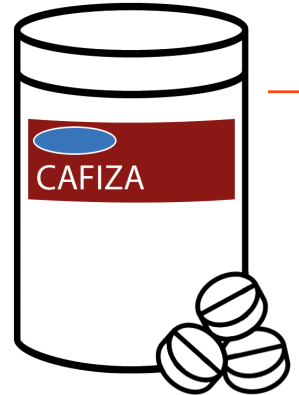
## Recommended Cleaning Products

### MIXING BOWL & BREW GROUP

Evoca North America recommends using **CAFIZA** tablets from Urnex, or equivalent cleaning products, to clean the mixing bowl and brew group of La Radiosa.

Make sure to always follow the product manufacturer's instructions.

Product code: 20ACC22



### MILK COMPONENTS

Evoca North America recommends using **Milk System Cleaning Tablets** from Evoca, or equivalent cleaning product, to clean the milk components of La Radiosa.

Make sure to always follow the product manufacturer's instructions.

Product code: 962961



*la Radiosa*

Product features, specifications  
& downloadable content  
available on our website



Scan Now!